



# Child Abuse/Neglect Intakes by Disposition and County, SHDHD

## ACE

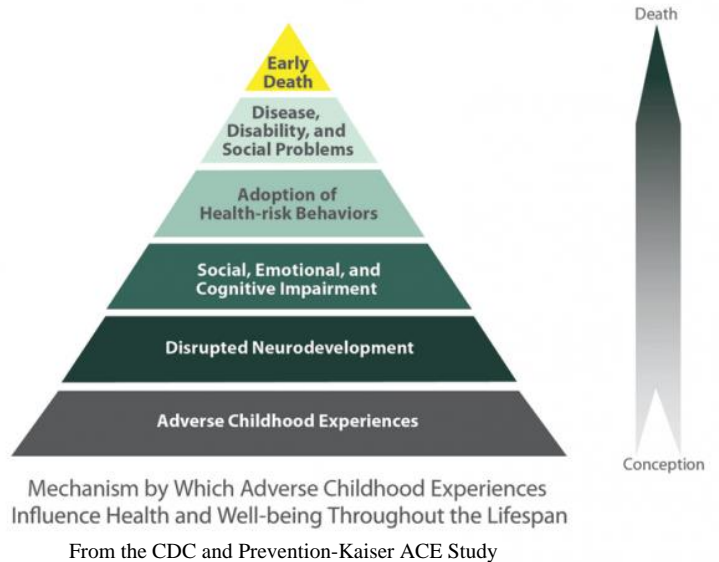
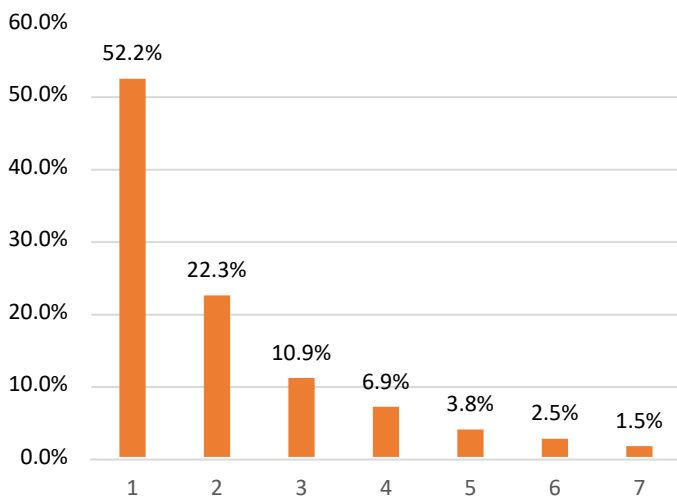
### What is an ACE?

According to the CDC, an ACE, or Adverse Childhood Experience, is a negatively impacting experience that a child may face. ACEs have a tremendous impact on future violence, victimization, and perpetration, and lifelong health opportunities. They are categorized into three groups: abuse, neglect, and family/household change.



## Number of ACEs: 2015 State BFRSS

Nebraska BFRSS 2015. From UNMC Behavioral Health Needs Assessment



Question	Total	Male	Female
Did you live with anyone who was depressed, mentally ill, or suicidal?	Yes: 18.0%	Yes: 15.6%	Yes: 20.3%
Did you live with anyone who was a problem drinker or alcoholic?	Yes: 24.6%	Yes: 22.2%	Yes: 26.8%
Did you live with anyone who used illegal street drugs or who abused prescription medications?	Yes: 10.8%	Yes: 11.7%	Yes: 10.0%
Did you live with anyone who served time or was sentenced to serve time in a prison, jail, or other correctional facility?	Yes: 8.7%	Yes: 10.0%	Yes: 7.4%
Were you parents separated or divorced?	Yes: 24.9%	Yes: 25.0%	Yes: 24.7%
How often did your parents or adults in your home ever slap, hit, kick, punch, or beat each other up?	At least once: 16.8%	At least once: 16.7%	At least once: 16.9%
	Multiple times: 11.2%	Multiple times: 11.9%	Multiple Times: 10.4%

Data for this table were provided by the Nebraska Department of Health & Human Services.

Nebraska BFRSS, 2015